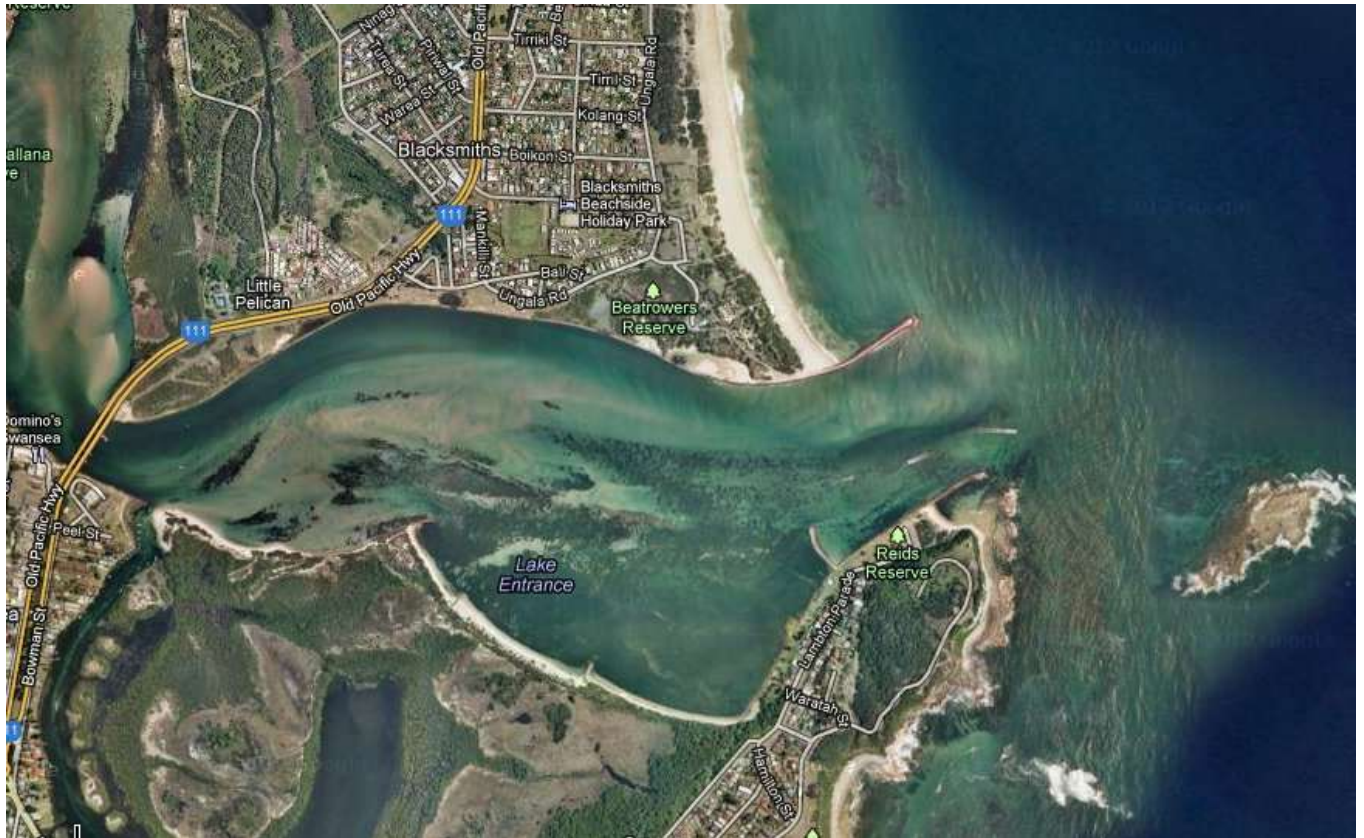


# Visiting Lake Macquarie

Lake Macquarie is the largest coastal salt water lake in Australia and is a prime boating destination for both small and large vessels. Many sailing regattas and fishing activities are held on the lake. When cruising offshore, Swansea Heads, the entrance to the lake, is approx. 36NM north of Broken Bay and 12NM south of Newcastle.

The Lake is **22 Km long**, with an **average depth of 8 metres**, an **area of 100 sq. Km**. The Lake offers visitors all the facilities to relax and enjoy a break.

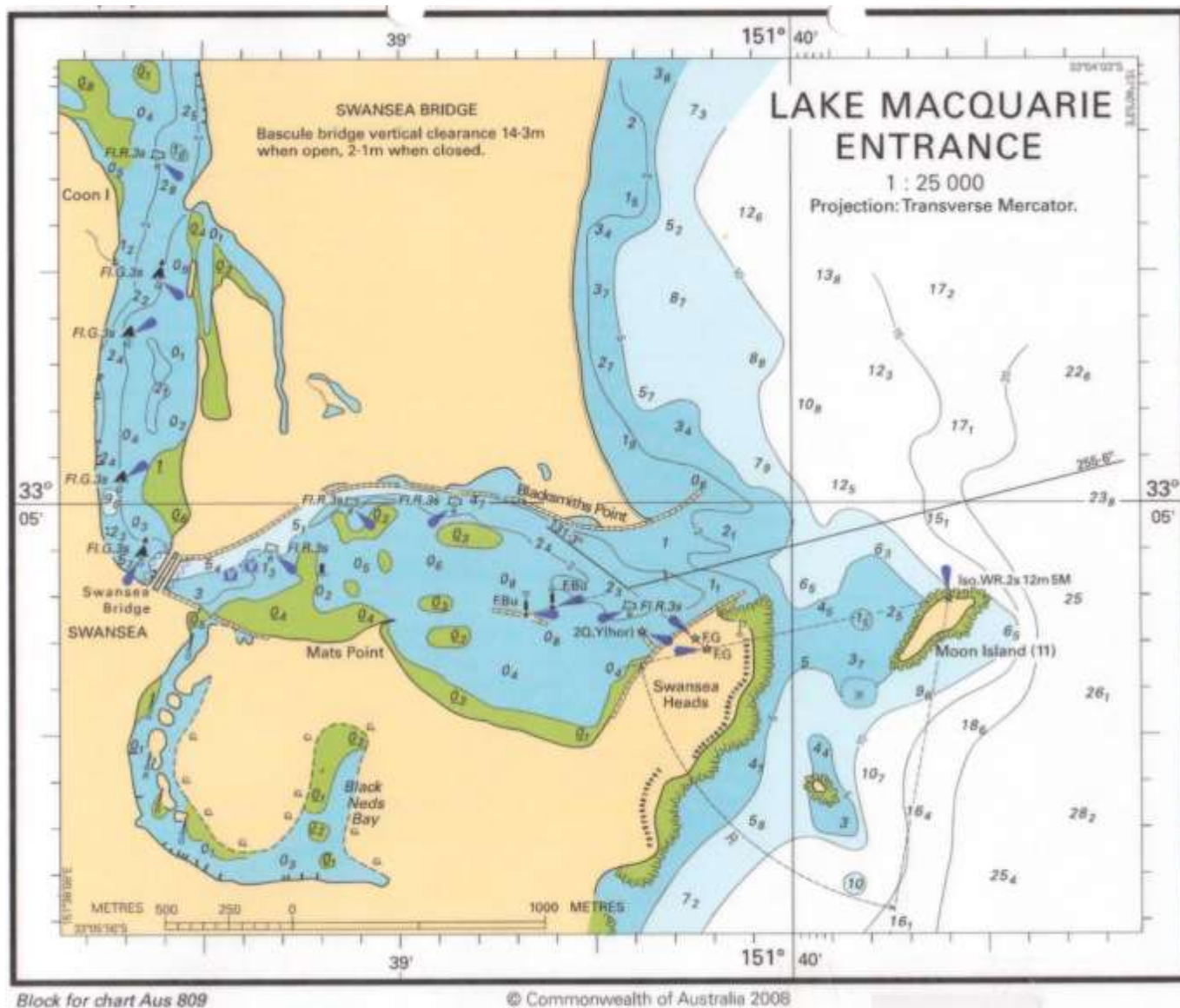
Entrance into Lake Macquarie is via the Swansea Channel at **GPS location S33°05.08' E151°39.93'**.



## Swansea Bar

PLEASE NOTE IT IS A REQUIREMENT BY NSW MARITIME REGULATIONS THAT ALL OCCUPANTS OF A VESSEL MUST WEAR AN APPROVED LIFE JACKET WHEN CROSSING SWANSEA BAR, REGARDLESS OF CONDITIONS.

The entrance into the channel has two sets of leads, plus some port lateral marks. There are no starboard markers. (see chart insert) When approaching from the south the leads are visible as you round Moon Island. When approaching from the north, **DO NOT** cut the corner of the northern break wall, as yachts will surely run aground. Vessels are advised to keep an easterly position off Moon Island before turning to align the leads.



The leads are red triangles, lights blue at night, on a bearing of 255 degrees true, as shown on the above chart. Moon Island light is a white /red sector light (Iso.WR.2s 12m 5M)

The bottom conditions do vary, but as a guide, the minimum depth on the line of the leads, is approx. 1.4 metres plus the tide height. Any sea/swell will of course reduce the depth in the troughs by approx. half the wave height.

**The worst bar condition** tends to occur, when there is a wind and sea/swell from the NE, the tide is near low but still running out.

Moon Island and the bomboras to its south, give some protection to the bar from a southerly swell.

*(In adverse conditions the skipper should consider going to Newcastle Harbour which is a safe deep water port in all conditions.)*

Prior to your voyage we suggest that you consult map 8A available on the Transport Maritime website at [Maps](#)

# Swansea Bridge

## ***Important Notes:***

- Contact details for Marine Rescue Lake Macquarie, VHF channel 16, channel 80 repeater (30 sec max call length), 27 MHz channel 88 and telephone 02-49713498.
- There are two **Pink** coloured courtesy moorings either side of Swansea Bridge and the Public wharves on the west side (Lake side) are for vessels waiting for a bridge opening
- Swansea Bridge clearance heights when closed, **2.0 metres under opening span** and **2.2 metres under fixed span AT LOW TIDE**. Due to strong tidal flows extreme caution should be exercised when navigating in the vicinity of Swansea Bridge
- The Bridge will **not** be opened in winds above **30 knots**

## ***Bridge Bookings - Larger Vessels***

Bridge bookings can only be made through Marine Rescue Lake Macquarie (*See contact details above*)

The bridge only opens on the hour, with various conditions as set out below.

**Weekdays:** From 6am to 6pm, one hour's notice is required to book a bridge opening. Due to heavier road traffic **no opening** is available at **8am or 4pm weekdays**.  
7pm – 5am, 6 hours' notice is required.

## **Weekends and Public Holidays**

Same opening hours as weekdays except the 8am and 4pm conditions do not apply. A vessel should make a booking through the Marine Rescue Lake Macquarie Radio Operator first as this will assist the bridge operator to coordinate the marine traffic.

You must provide the following information to the Marine Rescue Lake Macquarie Radio Operator **when a bridge opening is requested:**

1. Opening time required
2. Vessel name
3. Vessel registration
4. Whether the vessel is navigating into or out of Lake Macquarie
5. A mobile phone number to contact the vessel where the opening is required between 8pm and 5am.

## ***Bridge - Smaller vessels***

If your boat can pass under the bridge you may transit any span providing there is an adequate depth of water and vertical clearance for your vessel. You must keep right (starboard) whilst transiting under the selected span.

If the bridge is opening or is open you **must** obey the navigation lights on the open section and only progress on the green light through the open section.

# Swansea Channel

The channel is approximately 6.7 Km from the entrance to the drop over (locals call the last set of port and starboard markers into the lake "the drop over" as there is a large increase in depth at this point, and is the shallowest point of the channel prior to the drop over), It is 2.5 Km from the entrance to the bridge and a further 4.2 Km to the drop



over.

If you are a first time visitor to Lake Macquarie we strongly recommend that you **do not attempt a night navigation of Swansea channel. Pick up the courtesy moorings and wait till morning.**

Channel conditions through to the "drop over" vary and will depend on when the last dredging was carried out. The trouble areas tend to be just west of the eastern entrance to Swan Bay and then closer to the "drop over" itself

Vessels unfamiliar with the Swansea channel **can request an escort** by contacting Marine Rescue Lake Macquarie.(see contact details above)

**Please be aware that the skipper remains responsible for the safe navigation of the vessel at all times.**

